

The Mid-South Educational Vol.33 • No.2  
**Researcher**  
May 2005

**MSERA '05**  
**Leadership & Upcoming Annual Meeting**



**BATON  
ROUGE,  
LOUISIANA**



**Alabama, Arkansas, Kentucky,  
Louisiana, Mississippi, Tennessee**

**What's Inside**

*President's Message* .....2  
*2005 MSERA Leadership* .....3  
*Baton Rouge, Louisiana*  
*2005 Annual Meeting Site* .4-5  
*Bowman Award Nominations* ..6  
*Constitution/Bylaws Proposed*  
*Changes* .....6  
*Graduate Student Corner* .....7  
*Membership Form* .....7  
*Schedule of Events* ...Back Cover

# MSERA-Building on Tradition



## 2005 Board of Directors

President	Jane Nell Luster Louisiana Department of Education
Past-President	Scott Bauer George Mason University
President-Elect	Gahan Bailey University of South Alabama
Secretary	Linda Kondrick Arkansas Tech University
Treasurer	Dennis Zuelke Jacksonville State University
Alabama Representative	Rebecca Giles University of South Alabama
Arkansas Representative	Sherry Shaw University of Arkansas at Little Rock
Kentucky Representative	Mary O'Phelan Western Kentucky University
Louisiana Representative	Randy Parker Louisiana Tech University
Mississippi Representative	Dana Thames University of Southern Mississippi
Tennessee Representative	Patrick Kariuki Milligan College
State Department of Education	Shana Corvers Louisiana Department of Education
Local Department of Education	Kathy Holland Madison County, KY Schools
At-Large Representative	Gail Weems University of Arkansas at Little Rock
At-Large Representative	Lynn Howerton Arkansas State University
At-Large Representative	Jane McHaney University of Central Arkansas
At-Large Representative	William Spencer Auburn University
Executive Secretary	John Petry University of Memphis

## 2005 Publications Editors

MSERA Proceedings	John Petry University of Memphis
Research in the Schools	Larry Daniels University of North Florida Anthony Onwuegbuzie University of South Florida
The Researcher	Mary Jane Bradley Lynn Howerton Arkansas State University
MSERA Web Page	David Morse Mississippi State University

## Jane Nell Luster, 2005 MSERA President

May 2005. Amazing. It is amazing to me that we are already five months into this "new" year. It is amazing to think of what has been undertaken, is in process, and has been accomplished. I want to share some thoughts, hopes, expectations.

I thought back to my first MSERA conference in Knoxville, Tennessee. It was exciting -returning to the home of my undergraduate degree at the University of Tennessee, my first home after my graduation and marriage. And nearby in Anderson County, was the site of my first full time teaching job. Now in 1992 - 16 years later - I was now a doctoral student and attending my first MSERA annual meeting.

This first experience was of collegiality, interest, learning, fun, and acceptance. The latter is important because I found the members of MSERA treat everyone as part of an inclusive group - inclusive of college and university personnel, as well as people from school districts, departments of education, graduate students, in other words, people like me. Every year since, I have wanted to be a part of this organization.

MSERA has been hailed for its inclusive atmosphere and collegial support. The MSERA Mentors exemplify this. They are members experienced in the organization and their professional field and "volunteer their expertise to graduate students and newer members of the organization who may wish to seek advice on any phase of their own research, evaluation, or development efforts" (visit <http://www.msera.org/mentors.htm>).

In February the Board of Directors and Committee Chairpersons met in Baton Rouge and spent a wonderfully productive and tremendously intense 24 hours. Each Director and each Committee chairperson has been given a charge this year that expands upon the responsibilities of office (see the MSERA Operations Manual, <http://www.msera.org/opmanual.htm>).

One responsibility of State and At-Large Representatives "is to stimulate interest in the membership of the



Jane Nell Luster

Association." I have asked each representative to identify and undertake three ways to accomplish this task. I charge you as members with finding the name of your state or at-large representative and contacting him/her with your suggestions.

This year our MSERA leadership includes 19 Committees, four media editors of the *Researcher*, *Research in the Schools*, MSERA website, and Proceedings, two liaisons with other affiliations, and 11 representatives. The Executive Committee includes Past President Scott Bauer, President-Elect Gahan Bailey, Secretary Linda Kondrick, Treasurer Dennis Zuelke and me. And I have saved one of the most important leaders for last - the Executive Secretary, Mentor, and distinguished member John Petry.

One difficulty that exists in attempting to highlight certain activities and individuals is the possibility of failing to include all important members and leaders of our organization. I trust that any failure on my part in this section will be remedied by the coverage afforded on the MSERA website ([www.msera.org](http://www.msera.org)) and in this edition of the *Researcher*.

I thank all who have agreed to serve this year. I extend thanks to all who have volunteered for the many committees as well as informal roles. I thank the Board of Directors. And I thank you. It is amazing. So many exciting possibilities - let us join together in service - pick an opportunity and get involved.

-Jane Nell Luster  
MSERA 2005 President

## "Caught in the Web"

- About MSERA
- Downloadable Files
- Call for 2005 Papers
- Contact Information
- 2004 Proceedings
- Deadlines
- Links to related sites and organizations
- Officers & Board Contacts

MSERA Website  
[www.msera.org](http://www.msera.org)

## The Mid-South Educational Researcher

Co-Editors: Mary Jane Bradley  
and Lynn Howerton

The Mid-South Educational Researcher is published at Arkansas State University in Jonesboro, Arkansas with design and layout by Georgia Summitt. Subscriptions are free to current members of Mid-South Educational Research Association. Submit suggestions for content to either of the co-editors at MSERA Researcher, P.O. Box 1560, State University, AR 72467-1560. PHONE: 870-972-3064. FAX: 870-972-3962. E-MAIL: [mbradley@astate.edu](mailto:mbradley@astate.edu) or [howerton@astate.edu](mailto:howerton@astate.edu).

# 2005 MSERA Leadership

## 2005 Board of Directors

*Sherry Shaw*



*Shana Corvers*



*Kathy Holland*



*Lynn Howerton*



*Mary O'Phelan*



*Randy Parker*



*Jane McHaney*



*William Spencer*



*Dana Thames*



*Gail Weems*



*Patrick Kariuki*



*Rebecca Giles*



## 2004 Committee Chairs and Other Appointments

Archives/Paper Repository Committee-  
David Morse (Mississippi State University)

Budget Advisory Committee-  
Scott Bauer (George Mason University)  
Nola Christenberry (Arkansas State University)

Constitution and Bylaws Committee-  
Harry Bowman (Council on Occupational Education)  
Jim McLean (University of Alabama)

Development Committee-  
Linda Kondrick (Arkansas Tech University)  
Scott Bauer (Georgia Mason University)

Distinguished Awards Selection Committee-  
Gahan Bailey (University of South Alabama)

Evaluation Committee-  
Bill Spencer (Auburn University)  
Randy Parker (Louisiana Tech University)

Future Site Selection Committee-  
Bill Person (Mississippi State University)  
Lesia Lennex (Morehead State University)

Graduate Student Advisory Committee-  
Sherry Shaw (University of Arkansas at Little Rock)  
Pamela Broadston (University of Arkansas at Little Rock)

Local Arrangements Committee, Baton Rouge (2005)-  
Betty Porter (University of New Orleans)  
Kathy Campell (Academy of the Sacred Heart)

Local Arrangements Committee, Birmingham (2006)-  
Gypsy Abbott (University of Alabama at Birmingham)  
Richard Littleton (University of Alabama at Birmingham)

Local Arrangements Committee, Hot Springs (2007)-  
Linda Kondrick (Arkansas Tech University)

Membership Committee-  
Michael Ross (Kennesaw State University)  
Jesus Tanguma (University of Texas, Pan American)

Mentor/Pioneers  
Qaisar Sultana (Eastern Kentucky University)  
Nola Christenberry (Arkansas State University)

Nominations Committee-  
Scott Bauer (George Mason University)

Program Committee -  
Randy Parker (Louisiana Tech University)

Publications and Communications Committee-  
Robert Kennedy (University of Arkansas Medical Sciences)  
Tom Lucey (University of Memphis)

ERIC Liaison-  
John Petry (University of Memphis)

LERA Liaison-  
Randy Parker (Louisiana Tech University)

MSER Foundation Representative-  
Rob Kennedy (University of Arkansas Medical Sciences)

Technology Ad Hoc-  
Cliff Hofwolt (Vanderbilt University)  
Billy Franklin (University of Alabama)

Operations Manual Ad Hoc-  
Walt Matthews (Evaluation Associates of New York)  
Ron Adams (Western Kentucky University)

Exhibits/Venders Ad Hoc-  
Randy Parker (Louisiana Tech University)  
Julie Holmes (Louisiana Tech University)

*Gypsy Abbott*



*Bill Person*



*Gahan Bailey*



*Harry Bowman*



*Larry Daniel*



*Nola Christenberry*



*Mary Jane Bradley*



*Cliff Hofwolt*



*Rob Kennedy*



*Betty Porter*



*Jim McLean*



*David Morse*



*Anthony Onwuegbuzie*



*Qaisar Sultana*



# 2005 Annual Meeting at BatonRouge

## 101 Things to Do

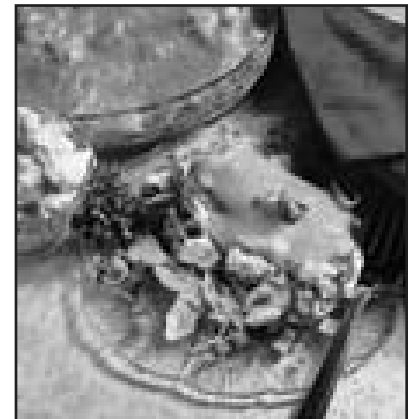


- Tour the Louisiana State Capitol
- Jambalaya, Crawfish Pie, File' Gumbo....Dine in any of our countless restaurants including Di Guilio's, Mike Anderson's, Silver Moon, Juban's, Fleur de lis, Pastime's, Gino's
- Tailgate at a Southern or L.S.U. sporting event
- Shop! Choose from the Mall at Cortana or the Mall of Louisiana
- Sporting events such as the River Bats, Tigers and Jags
- Visit the stately plantation homes in St. Francisville or along River Road
- Up, Up, and Away! At the Pennington National Balloon Championship
- Red Stick monument on the bluff at Southern University
- Walk through the Louisiana State University Campus. Pay special attention to the Indian Mounds!
- LSU Rural Life Museum/Windrush Gardens
- Louisiana Art and Science Museum
- Irene W. Pennington Planetarium
- Greatest Show on Dirt: the Angola Prison Rodeo
- Kiss the Irish at the St. Patrick's Day Parade
- Local blues musicians; Tabby's Blues Box, Phil Brady's, Swamp Mama's and more
- Boutin's—enjoy Cajun dining as well as listening to Cajun music
- USS Kidd and Louisiana Veterans Memorial Museum
- Alligator Bayou on Bluff Swamp
- BREC's Baton Rouge Zoo
- Broadway Series at Baton Rouge River Center's Theater
- Performing arts; Baton Rouge Symphony, Little Theater, Swine Palace, Baton Rouge Ballet Theater and many more.
- Red Stick Farmer's Market
- Stroll/jog along the Mississippi River levee at sunset/sunrise
- Spanish Town Parade
- Tony's Seafood featuring a live catfish farm
- Old Governor's Mansion
- Old State Capitol
- Cooking demonstrations at Magnolia Mound Plantation
- Bonfires on the Levee
- Blues Week! It's the real deal!
- Delta Queen paddle wheel riverboat
- Magnolia Cemetery
- Pentagon Barracks
- Bluebonnet Swamp
- Hilltop Arboretum
- Port Hudson State Commemorative Area,
- Southern University Museum of Art
- Odell S. Williams African American History Museum
- Baton Rouge's City Park; tennis, golf, biking, walking or running
- Visit "Mike the Tiger" on the LSU Campus
- Visit "La Cumba," the Southern University jaguar, on the SU Campus
- Mardi Gras parades in downtown Baton Rouge
- Baton Rouge Gallery in City Park.
- Comite and Hooper Road Bike Trails
- Tickfaw State Park.

# 2005 Annual Meeting at Baton Rouge

## in Baton Rouge

- Highland Road Observatory
- Audubon Golf Trail!
- Ancestor hunt at the State Archives
- Visit Old Bogan Fire Station
- Argosy Casino & Casino Rouge—try your luck!
- Antique Shopping
- Louisiana Governor's Mansion.
- The Enchanted Mansion: A doll museum
- West Baton Rouge Museum.
- Old Arsenal Museum
- Fest for All the first weekend in May
- Downtown 4 th of July celebration
- Live after 5 Spring and Fall
- "Screen Classic Silent Films" at City
- Authentic Louisiana arts and crafts, every 1 st Saturday
- Rent a Harley Davidson and head for the Feliciana hills.
- Take the ferry across the Mississippi River.
- Neubig's Gallery.
- Port Allen/Plaquemine Locks
- Challenger Mission at the Challenger Learning Center, Louisiana Art and Science Museum
- Buy a cookbook; such as John Folse and Holly Clegg or pick up the cookbook River Road Recipes ,
- Mid-City Shopping-unique, cool, fun!
- Pause and Refresh yourself at the nostalgic Coca-Cola sign on 3rd St.
- Antique carousel at the Mall of Louisiana
- Play around at Blue Bayou Water Park, Celebration Station or Dixie Landing
- Fluker's Cricket Farm
- Ride the trolleys through downtown
- Winter ice skating
- Brazilian Margaritas at Marrazil's Restaurant
- International Festival
- Earth Day
- Louisiana State Museum
- Shaw Center for the Arts.
- Dreamland Ribs; Ain't nothing like them nowhere
- Gospel music at the Greater King David Baptist Church
- Visit the Baton Rouge Area Convention And Visitors Bureau, 730 North Blvd, Baton Rouge. 800-LA-ROUGE, visitbatonrouge.com



### Holiday Inn Select

4728 Constitution Avenue  
Baton Rouge, LA 70808  
1-225-925-2244  
[www.hiselect.com/execcenterbtr](http://www.hiselect.com/execcenterbtr)

**Room rates:**  
Single/Double \$89

*Mention MSERA for rate!*

For more information, visit the web at <http://visitbatonrouge.com/>

# MSERA 2005 Spring Board Meeting Scrapbook



## Call for Nominees for Harry L. Bowman Service Award

The Executive Committee will consider nominations for the Harry L. Bowman Service Award. This annual award is given to an MSERA member for continued service and contributions to MSERA. The award consists of a plaque and is presented during the business meeting in November. Any MSERA member may submit a nomination for this award. Written letters of nomination must be postmarked by **September 14, 2005**. Please send nominations to **Jane Nell Luster, President MSERA, NCSEAM, PMB 615, 315 4B College Drive, Baton Rouge, LA 70808, [jluste@lsuhsc.edu](mailto:jluste@lsuhsc.edu), Fax: 225-267-4228.**

Proposed Revisions for Consideration by the MSERA Membership  
Thursday, November 10, 2005

Proposed additions: **bold/underlined** Proposed deletions: *[brackets/italics/underlined]*

### BYLAWS ARTICLE II DUTIES OF THE OFFICERS AND DIRECTORS OF THE ASSOCIATION

Section 4. The Treasurer shall keep account of and report all monies received on behalf of the Association and shall write checks as authorized by the Board. The Treasurer shall prepare and submit the books of the Association for an annual audit to be conducted after the close of the business year by *[an]* **two** active members, other than the **current**, incoming, or outgoing Treasurer, **one appointed by the outgoing President and one** appointed by the incoming President.

Section 8. *[e. The Executive Secretary shall maintain records of membership for the Association.]*

*[f] e.* The Executive Secretary shall perform business and communication functions of the association as directed by the Board.

#### Rationale for Proposed Revisions

The proposed changes recommended by the Board are intended (1) to add more objectivity and credibility to the conduct of the mandated annual audit of the Association's financial records and (2) to transfer the responsibility for maintaining records of the Association's membership from the Executive Secretary (as stated in the Bylaws) to the Secretary (as stated in the MSERA Operations Manual) under the new structure that divides the office of Secretary-Treasurer into the offices of Secretary and Treasurer.

# Graduate Student Corner



Co-Chairs Pamela Broadston and Sherry Shaw

Hello Graduate Students!

We strongly encourage you to get involved in MSERA and this year's meeting in Baton Rouge is a great place to start. We are offering a new feature to this year's program called

**Research in Progress (RIP)**, and it's just for you! These sessions will allow you to discuss your research interests, plans, and progress and receive feedback and suggestions. The format of the session will be a discussion session with additional time for feedback. If you would like to present your research project in an RIP session, do NOT use the MSERA submission website. Instead, please email: 1) an abstract (300 word max) of your research proposal, and 2) a memo of support from your advisor or sponsoring faculty member to slshaw@ualr.edu or pmbroadston@ualr.edu by June 30th. You will be notified in July as to the status of your submission.

More good news...thanks to the generosity of the MSER Foundation, we will be able to contin-

ue providing a student and new member breakfast and social hour. You will have the opportunity to win lots of door prizes at these events, so please plan on attending. As last year, we will enjoy the opportunity to talk with you individually about your experiences as a student. Finally, when you get to the meeting, be sure to stop by the Graduate Student Advisory Committee Welcome Table for a list of session highlights, especially training sessions, of particular interest to graduate students. We look forward to working with you this year and seeing you in Baton Rouge!

Your Graduate Student Advisory Committee Co-Chairs Pamela Broadston (pmbroadston@ualr.edu) Sherry Shaw (slshaw@ualr.edu)

## 2005 MSERA Membership Form *(Please print or type)*

Name: \_\_\_\_\_

Institution: \_\_\_\_\_

Mailing Address: \_\_\_\_\_

Telephone: Work ( ) \_\_\_\_\_ Home ( ) \_\_\_\_\_

FAX ( ) \_\_\_\_\_ E-mail \_\_\_\_\_

### MEMBERSHIP CURRENT?

Check the label on the back cover. It should say 2005 if you are current.

MSERA Membership:  Renewal or  New AERA Member:  Yes or  No

Dues:  Professional (\$25) or  Student (\$15) MSER Foundation Contribution \$ \_\_\_\_\_

Check Total \$ \_\_\_\_\_ *(Make check payable to MSERA.)*

Send this form and check to: **Dennis Zuelke**  
**MSERA Treasurer**  
**P.O. Box 639**  
**Jacksonville, AL 36265**

Have you been a member of MSERA for at least 15 years? Yes No (circle one)

**IMPORTANT NOTE:** The Annual Meeting registration fee includes membership dues for the following year. If you registered for the Annual Meeting in Gatlinburg, you paid your dues for 2005. If you did not register for that meeting, please remit your 2005 dues using this form. Registration for the Annual Meeting in Baton Rouge, LA, November 9-11, 2005 will include your dues for 2006.

Your participation in MSERA activities is greatly appreciated. Please indicate any activities you would be interested in during the year.

- Annual Meeting Registration Desk. *Serves in information center and registers participants at the annual meeting.*
- Annual Meeting Session Chair. *Presides for a session with 3-4 presentations by opening the session, keeping time, moderating discussion and closing the session.*
- Budget planning, and Analysis Committee. *Analyzes past budgets.*
- Constitution and Bylaws Committee. *Considers and proposes needed changes in the MSERA constitution and bylaws.*
- Development Committee. *Identifies and solicits sources of financial support.*
- Distinguished Awards Selection Committee. *Reviews papers submitted for the outstanding paper award and the distinguished dissertation/thesis award.*
- Evaluation Committee. *Evaluates the annual meeting.*
- Future Site Selection Committee. *Recommends future annual meeting sites.*
- Graduate Students Advisory Committee. *Recommends and conducts activities to encourage graduate student membership and participation.*
- Local Arrangements Committee. *Serves as liaison for annual meeting and coordinates with local resource people.*
- Membership Committee. *Recommends and conducts activities to promote MSERA membership.*
- Nominations Committee. *Selects candidates for the next MSERA election.*
- Program Committee. *Reviews abstracts submitted for the annual meeting program.*
- Publications and Communications Committee. *Recommends policy for MSERA publications and communication.*

# Schedule of Events



2005 Annual Meeting  
Baton Rouge, LA

## Mark Your Calendar!

### 2005 Deadlines:

- April 1 Board of Director & Officer Nominations
- June 30 Paper Proposal Submission (online only)
- June 30 Outstanding Paper Submission
- June 30 Distinguished Thesis/Dissertation Submission
- Sept 14 Bowman Service Award Nominations

2005 Annual Meeting  
November 9-11  
Holiday Inn Select  
Baton Rouge, Louisiana

2006 Annual Meeting  
November 7-9  
Wynfrey Hotel Galleria  
Birmingham, Alabama

## 2005 MSERA Executives



Past-President  
Scott Bauer



President  
Jane Nell Luster



President-Elect  
Gahan Bailey



Treasurer  
Dennis Zuelke



Executive  
Secretary  
John Petry



Secretary  
Linda Kondrick

### THE RESEARCHER

Published at Arkansas State University  
for the Mid-South Educational Research Association  
Department of Psychology & Counseling  
College of Education  
P.O. Box 1560  
State University, AR 72467-1560



NONPROFIT ORGANIZATION  
U.S. POSTAGE  
PAID  
STATE UNIV., AR 72467  
PERMIT NO. 5